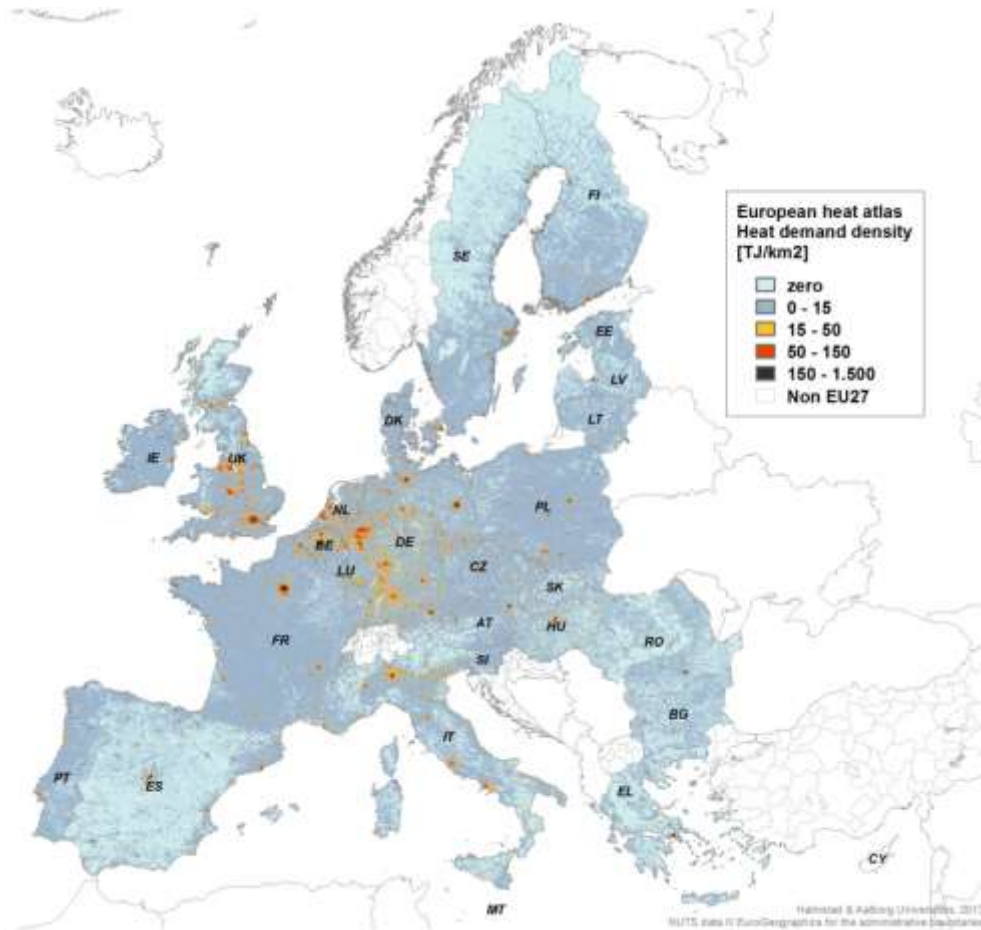




Marie-Thérèse Tetteroo-Mathijssen
Policy Advisor

6 November 2013

Introduction



6 November 2013

Marie-Thérèse Tetteroo-Mathijssen

Introduction



6 November 2013



Marie-Thérèse Tetteroo-Mathijssen

Introduction



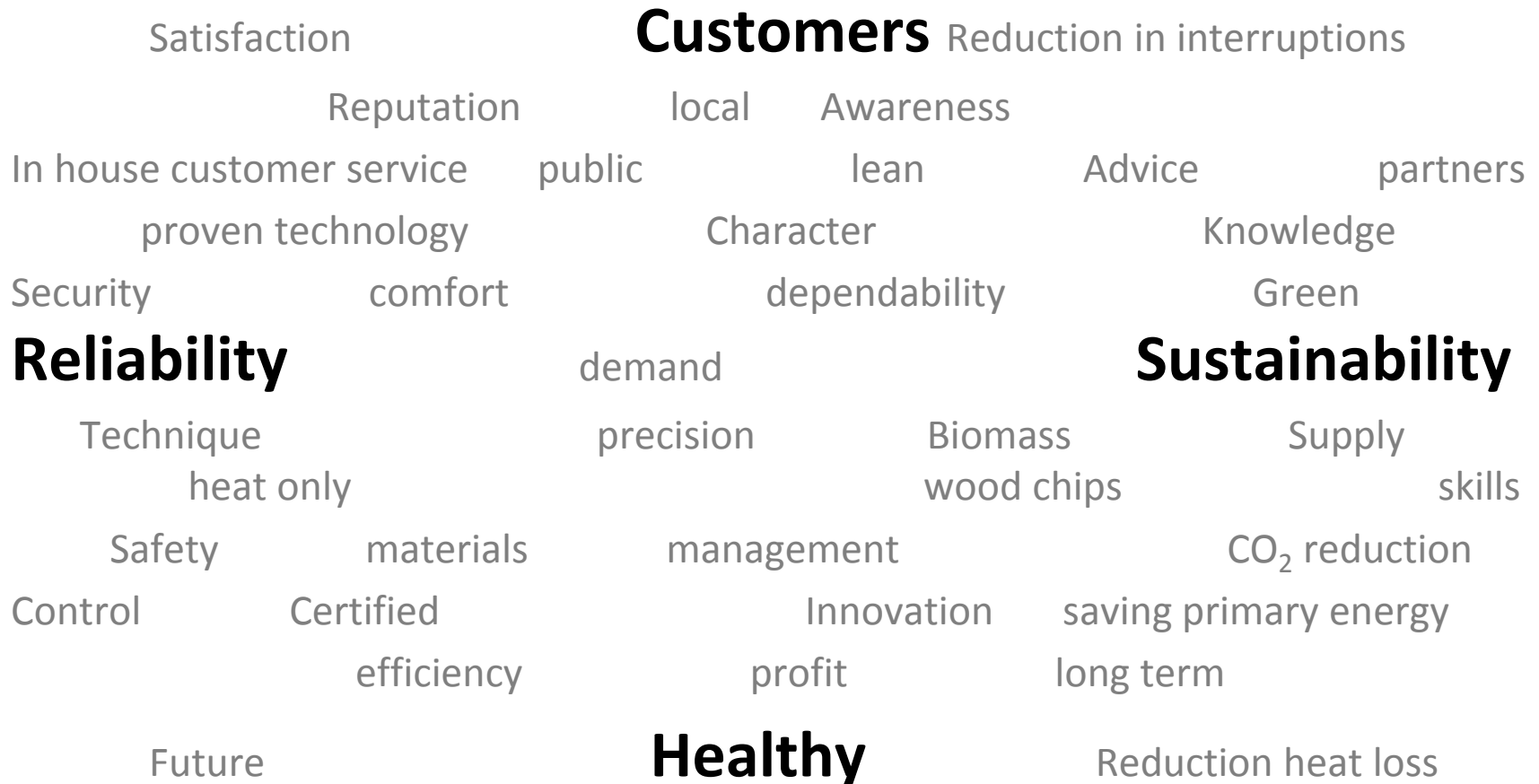
- Established in 1980, privatised in 2007
- 75% of the city of Purmerend is connected
- 25,000 customers to date:
 - 60,000 residents (75%)
 - 1,000 companies
- 2509 km of grid
- Until 1st of July 2014: heat from Nuon/Vattenfall

2007

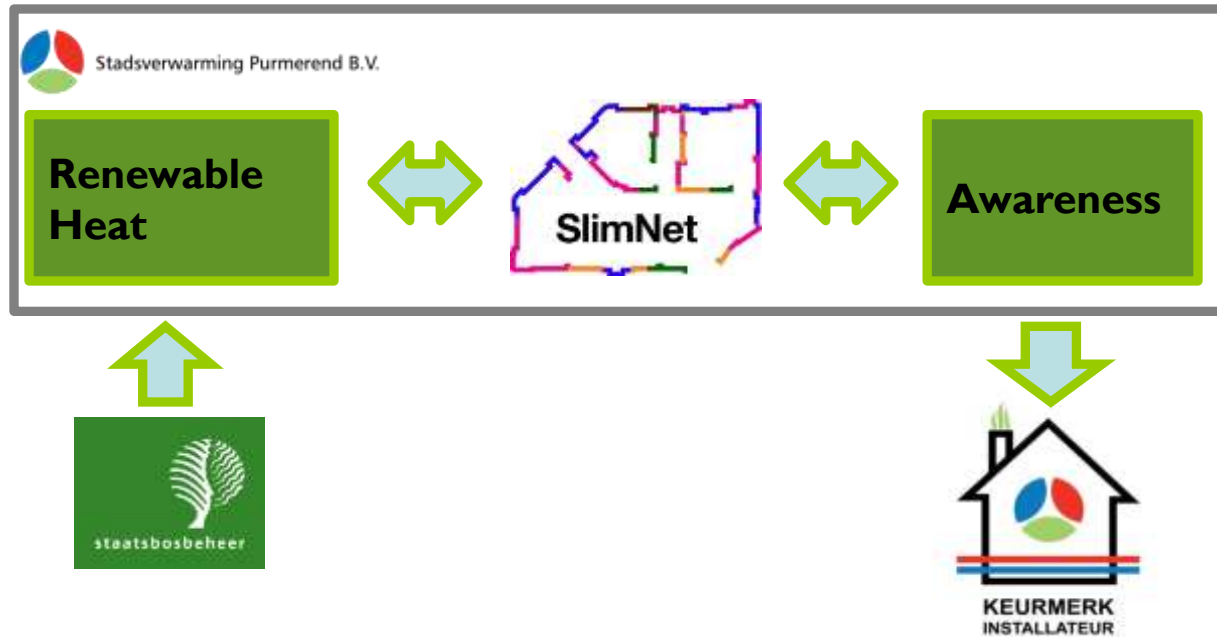


- A dated company
- Structurally unprofitable
- Dependent on heat supply by others
- High heat loss
- Unsatisfied customers

PROBLEM OR CHALLENGE ?



Chain integrated



Production



- 4 x 11 MWth
- Heat only
- Efficiency over 99%



6 November 2013

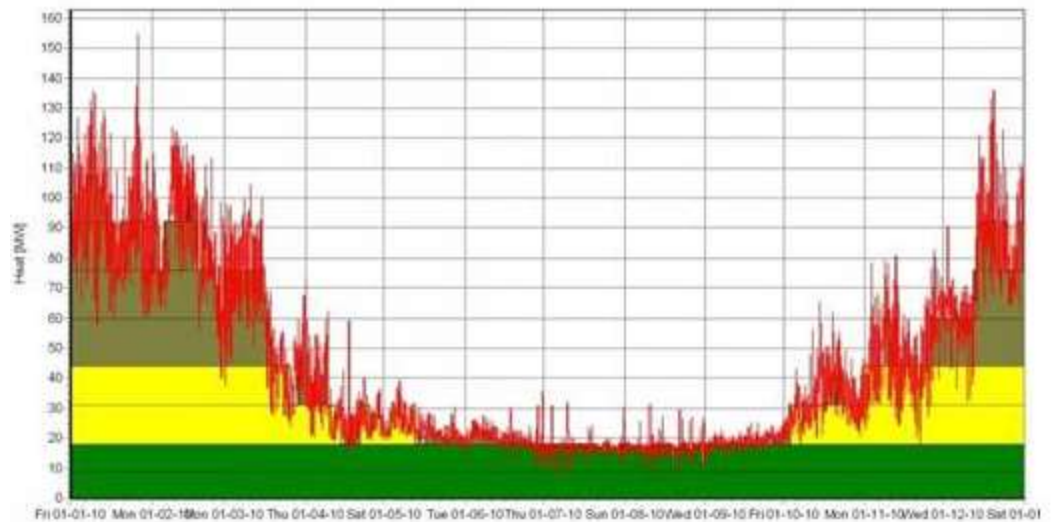
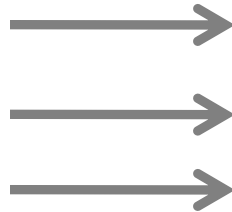
Production



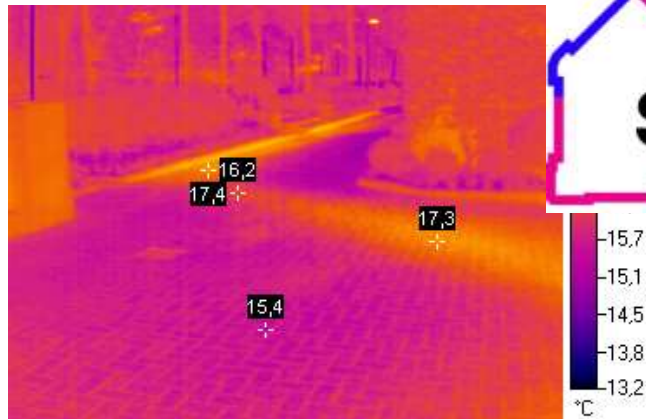
- Reduction of 50.000 ton CO₂
- Reduction of 30 million m³ gas

80% Biomass heat installation
20% Auxiliary boilers

Peak
Seasonal
Base



SlimNet



6 November 2013

Marie-Thérèse Tetteroo-Mathijssen

Reduction of:

- Heat loss
- Water suppletion
- CO₂ emissions
- Number of failure repairs
- Deterioration of network



Awareness



- Certification & guidelines
- Advice
- Communication



Support



Co-funded by the Intelligent Energy Europe Programme of the European Union



Government of the Netherlands

Questions?



Marie-Thérèse Tetteroo-Mathijssen

M.Tetteroo-Mathijssen@svpbv.nl

+31 6 13236516

Tabel 1 **Overzicht grootschalige warmtenetten in Nederland**

Warmtenet	Leverancier	Producent	Primaire energiebron ²	Aantal Verbruikers (x1.000)	Aandeel <1.000kW
Almere	Nuon Warmte	Electrabel	Gas	42,9	100,0%
Amernet	Essent Warmte	Essent Energy Trading	Steenkool	31,1	99,6%
Amsterdam	Nuon Warmte	Nuon ET&W	Gas	7,5	99,2%
Den Haag - Ypenburg	Eneco Warmte	Eneco DEP	Gas	8,9	99,0%
Duiven - Westervoort	Nuon Warmte	AVR Afvalverwerking	Afval	8,7	99,9%
Enschede	Essent Warmte	Essent Energy Trading	Gas	5,2	99,7%
Helmond	Wamob	Essent Energy Trading	Gas	6,4	99,9%
Leiden	Nuon Warmte	E.On	Gas	6,3	99,3%
Purmerend	SV Purmerend	Nuon ET&W	Gas	24,3	100,0%
Rotterdam	Eneco Warmte	E.On	Gas	43,5	99,0%
Utrecht - Stad	Eneco Warmte	Nuon ET&W			
Utrecht - Leidsche Rijn	Eneco Warmte	Nuon ET&W	Gas	41,7	99,0%
Utrecht - Nieuwegein	Eneco Warmte	Nuon ET&W			
Totaal				226,5	

Source: Rapport Warmtenetten in Nederland CE Delft (2009)





6 November 2013

Marie-Thérèse Tetteroo-Mathijssen